

GARDENIA
L I V I N G S



S.N SAXENA

FOUNDER

CEO MESSAGE

The concept of Gardenia Livings is to offer comfort and convenience while providing the setting for an inspired lifestyle in Dubai. It is our mission to give you outstanding services both in Dubai and worldwide. With our commitment to authenticity and timely delivery, we are confident in the ability to redefine luxury living.

Gardenia Livings is destined to be one of our most valuable projects to date. Residents get to live a vibrant environment with quality & luxury to suit, making it an ideal place for them. With its opulent architecture, high-end amenities, and fine interior design, this project will be the benchmark for many years to come.

PARTNER'S MESSAGE

The goal of Gardenia Livings was to build a beautiful and luxurious project, one that would inspire visitors and residents alike. Gardenia Livings offers luxurious amenities, efficient security, and an infinity pool to provide a peaceful, entertaining lifestyle for those looking for a serene, tranquil living environment in Dubai. Our goal at Safe Developers is to provide you with luxury as well as comfort not only here in Dubai, but also around the globe. Gardenia Livings is one of our best projects since we pride ourselves on designing homes that speak of eco-friendliness and comfort.

A circular portrait of a man with dark hair, wearing a dark blue shirt, looking slightly to the right. The portrait is set against a light background and is framed by a white border with a dark green shadow effect.

RAHUL K GUPTA

PARTNER



DUBAI

LIVING THE DREAM



SAFE THE DEVELOPERS

The Silgo Group of Companies established Safe Developers to build dream homes, to establish a foundation for excellence. The company is the culmination of 35 years of progress. This progression was set by Silgo Group, started in the 1980s as a construction-based company that specialized in interiors, manufacturing, trading, events, and logistics. With Safe Developers launching a new project, the picture is much broader.

The team at Safe Developers has experience with knowing what their customers want and aim to deliver at the best price and the highest quality.



GARDENIA LIVINGS

Gardenia Livings is devoted to the creation of an exquisite lifestyle within Dubai. The luxurious landmark is situated in a lush green environment at the entrance to Dubai's Arjan, offering a lavish residential setting.

Apartments at Gardenia Livings features a seven-floor elevation, situated in a perfect locality, a world-class architecture, incorporated with a sophisticated interiors for every need, consisting of 15 types of 1 Bedroom and 11 types of 2 Bedroom apartments, each designed for maximum space, comfort, and luxury. The rooftop caters to an event space for 200 people, and its amenities include a designated fitness area, a barbecue space, and much more.





CONNECTED TO THE CITY

Burj Al Arab
10 MINUTES

Burj Khalifa
18 MINUTES

Dubai Hills Mall
5 MINUTES

Miracle Garden
2 MINUTES

Global village
8 MINUTES

Mall Of The Emirates
10 MINUTES

IDYLIC LIFESTYLE

The pinnacle of residential sophistication, each apartment has spectacular views becoming the most sought-after homes in the city. The landmark seems to float in a lush green garden when viewed from two of its three sides.

Each apartment has its own terrace, featuring breath-taking views, luxurious dining and living spaces, the definitive location for attractions, embodying a perfect lifestyle.





SAFE

GARDENIA
LIVING

ACQUILIA TRAINING LTD





AMENITIES

Gardenia Livings offers a wide variety of amenities.

- Infinity Pool
- Event Space
- Designated BBQ Area
- Kids Play Area
- Multifunctional Roof Top Fitness Area
- Covered Car Parking
- 24/7 Security Surveillance
- Outdoor gym





SAFE

GARDENIA



EXQUISITE INTERIORS

Gardenia Livings apartments feature high quality flooring, imported European sanitary ware, and fully fitted modern kitchens with stone countertops. Bespoke work consisting of fine textile creations, architecture & much more.









LUXURY APARTMENTS

1 Bedroom
2 Bathroom
1 Kitchen
1 Lounge
Area: 652 sq.ft



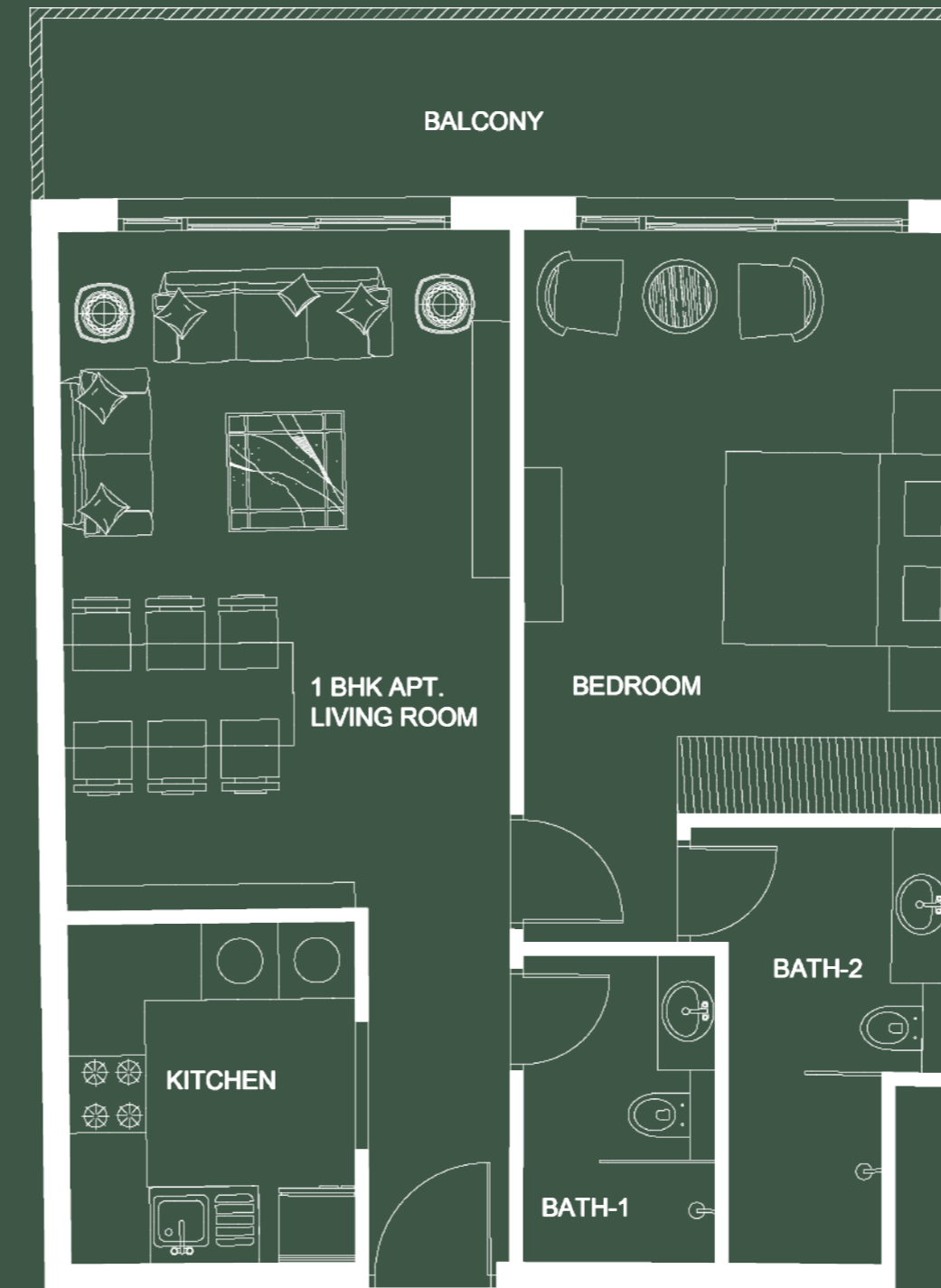
1 BEDROOM

2 Bedroom
3 Bathroom
1 Kitchen
1 Lounge
Area: 880 sq.ft

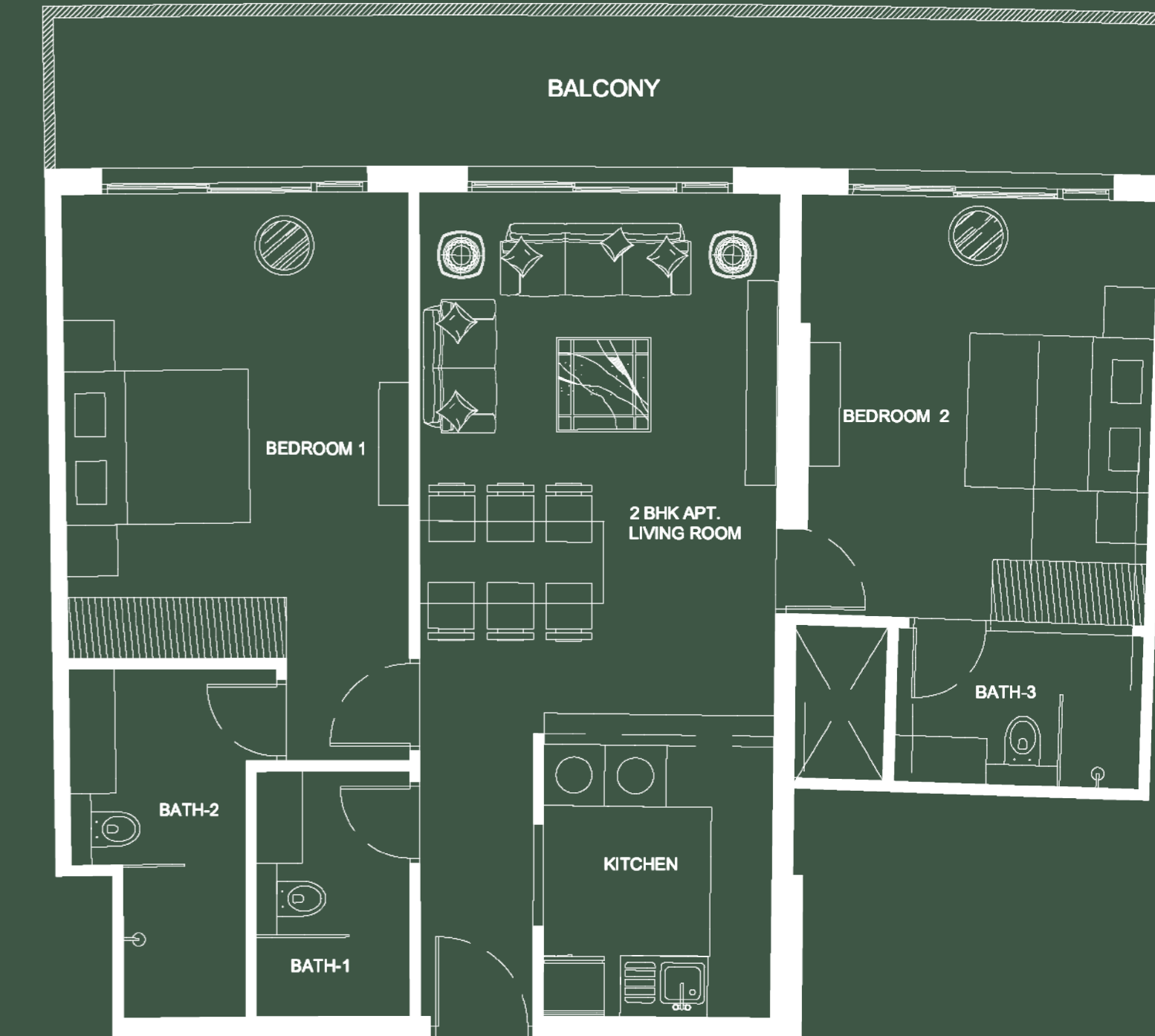


2 BEDROOM

APARTMENT LAYOUTS



1 BEDROOM



2 BEDROOM

